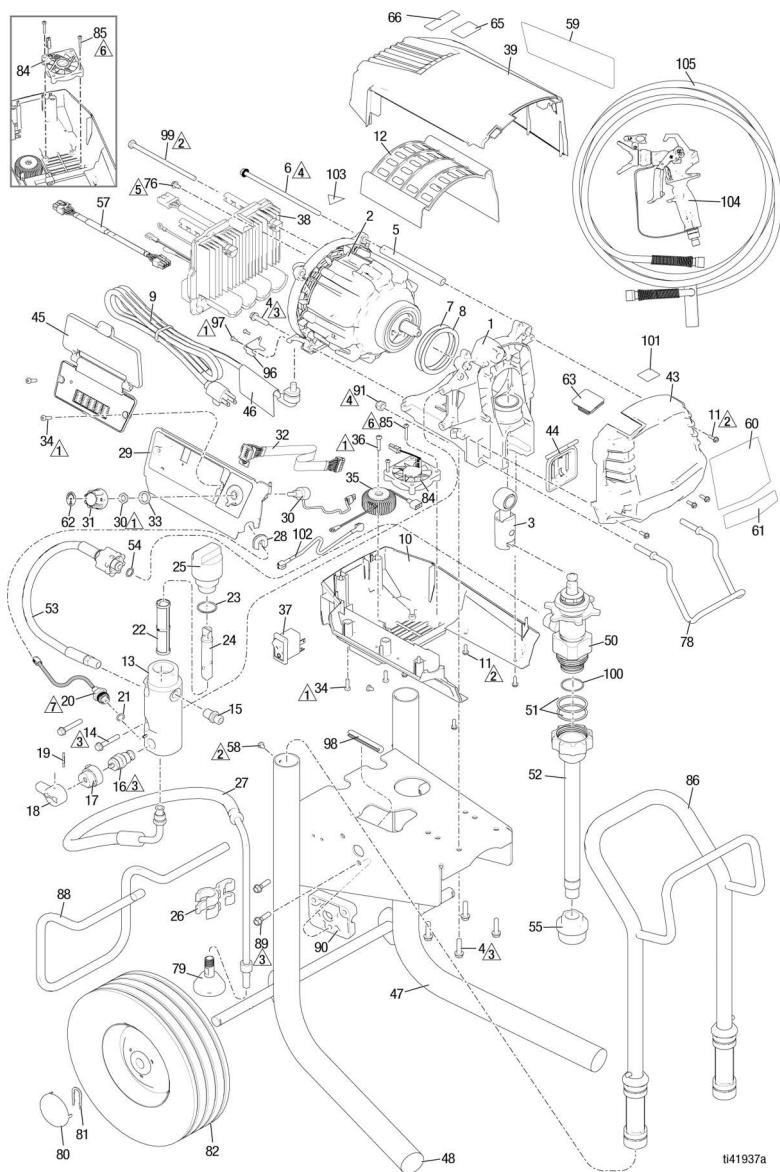









Hi-Boy Models 490 XT, 495 XT



1141937a

| Ref. | Torque | Ref. | Torque | Ref. | Torque |
|---|-------------------------------|---|---------------------------|---|-----------------------------|
|  | 12-16 in-lb (1.4-1.8 N•m) |  | 70-75 in-lb (7.9-8.5 N•m) |  | 37-43 ft-lb (50.2-58.3 N•m) |
|  | 20-25 in-lb (2.3-2.8 N•m) |  | 40-45 in-lb (4.5-5.1 N•m) | | |
|  | 140-160 in-lb (15.8-18.1 N•m) |  | 8-10 in-lb (0.9-1.1 N•m) | | |

Hi-Boy Model Parts List 490 XT, 495 XT

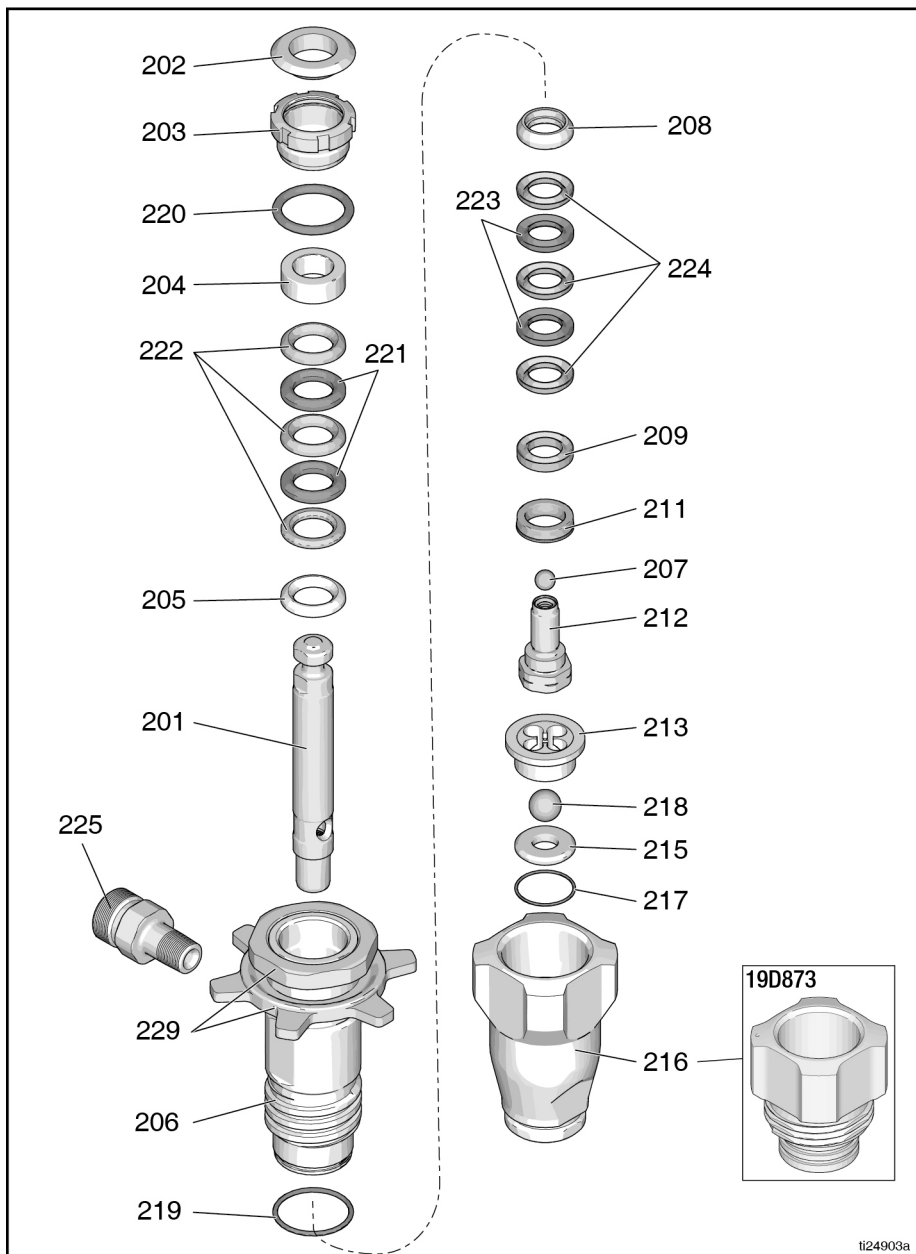
| Ref. | Part | Description | Qty. | Ref. | Part | Description | Qty. |
|------|------------|--|------|------|-----------|---|------|
| 1 | 20B413 | HOUSING, pump with sleeve, <i>includes 4, 7, 8</i> | 1 | 43 | 20B430 | COVER, front, painted, <i>includes 11</i> | 1 |
| 2 | | MOTOR, Graco, XT, <i>includes 4, 5, 6, 7, 8</i> | 1 | 44 | 17C484 | COVER, PC Pro pump rod | 1 |
| | 19C924 | 490 | | 45 | 20B431 | MODULE, display only, <i>includes 34</i> | 1 |
| | 19D860 | 495 | | | 20B432 | MODULE, BlueLink w/ display, <i>includes 34</i> | 1 |
| 3 | 20B414 | ROD, connecting, SM electrical assembly | 1 | 46 ▲ | See pg.48 | LABEL, warning, English, French, Spanish | 1 |
| 4 | 20B534 | SCREW, mach, hex washer hd. | 6 | 47 | 19D436 | FRAME, cart, Hi-Boy, <i>includes 48</i> | 1 |
| 5 | 20B415 | SPACER, tie rod, motor, <i>includes 6</i> | 2 | 48 | 108691 | PLUG, tube | 2 |
| 6 | 19C928 | SCREW, cap, 1/4-20 x 6 | 2 | 50 | 19D873 | PUMP, Displacement, small electric, <i>includes 51, 100</i> | 1 |
| 7 | 19C534 | SPRING, wave washer | 1 | 51 | 16N901 | O-RING | 2 |
| 8 | 19C535 | SHIM | 1 | 52 | 20B299 | TUBE, suction, assembly | 1 |
| 9 | See pg.48 | CORD, power, lighted, <i>includes 46</i> | 1 | 53 | 20B439 | HOSE, coupled, <i>includes 54</i> | 1 |
| 10 | 20B421 | SHIELD, motor, bottom, <i>includes 11, 36, 37, 85</i> | 1 | 54 | 16H137 | O-RING | 1 |
| 11 | 2001659 | SCREW, mach, slot hex washer hd. | 8 | 55 | 246385 | STRAINER | 1 |
| 12 | 19D292 | COVER, motor | 1 | 57 | 19B596 | HARNESSE, encoder | 1 |
| 13 | 20B440 | MANIFOLD, fluid, <i>includes 14, 15</i> | 1 | 58 | 109032 | SCREW, mach, pan hd. | 4 |
| 14 | 117493 | SCREW, mach, hex washer hd. | 3 | 59 | See pg.48 | LABEL, brand, side | 1 |
| 15 | 162453 | FITTING, 1/4 NPSM x 1/4 NPT | 1 | 60 | See pg.48 | LABEL, brand, front upper | 1 |
| 16 | 235014 | KIT, replacement, valve, drain, <i>Includes 17, 18, 19</i> | 1 | 61 | 20B551 | LABEL, Xtreme Torque | 1 |
| 17 | 224807 | BASE, valve | 1 | 62 | 19D678 | LABEL, control | 1 |
| 18 | 187625 | HANDLE, valve, drain | 1 | 63 | 19D261 | PLUG, shroud, painted | 1 |
| 19 | 111600 | PIN, grooved | 1 | 65 | 16D576 | LABEL, made in USA | 1 |
| 20 | 20B422 | TRANSDUCER, pressure control, <i>includes 21, 28</i> | 1 | 66 | See pg.48 | LABEL, A+ service, Home Center | 1 |
| 21 | 111457 | PACKING, o-ring | 1 | 76 | 114391 | SCREW, grounding | 2 |
| 22 | 246384 | FILTER, fluid, 60 mesh | 1 | 78 | 2001457 | HANGER, pail, threaded | 1 |
| 23 | 117828 | O-RING, PTFE, encapsulated | 1 | 79 | 241920 | DEFLECTOR, threaded | 1 |
| 24 | 15B071 | INSERT, filter | 1 | 80 | 104811 | CAP, hub | 2 |
| 25 | 15G456 | CAP, filter | 1 | 81 | 15B999 | CLIP, retaining | 2 |
| 26 | 276888 | CLIP, drain line | 1 | 82 | 106062 | WHEEL, semi-pneumatic | 2 |
| 27 | 287952 | HOSE, drain, Ultra, Hi-Boy, <i>includes 79</i> | 1 | 84 | 19D790 | FAN, 5V DC, square | 1 |
| 28 | 19C988 | GROMMET, transducer | 1 | 85 | 19D789 | SCREW, plastite, #6 torx pan hd. | 2 |
| 29 | 20B424 | SHIELD, motor, side, painted, <i>includes 28, 34</i> | 1 | 86 | 287489 | HANDLE, assy., Hi-Cart | 1 |
| 30 | 20B425 | POTENTIOMETER, encoder, <i>includes 33</i> | 1 | 88 | 15D281 | HANGER, stand, cart | 1 |
| 31 | 2002370 | KNOB, potentiometer, assembled, <i>includes 33, 62</i> | 1 | 89 | 114531 | SCREW, mach, hex washer hd. | 4 |
| 32 | 19C527 | HARNESSE, display/pot | 1 | 90 | 15C982 | CAM, cart | 2 |
| 33 | 15C973 | GASKET | 1 | 91 | 111040 | NUT, lock, insert, Nylock, 5/16 | 2 |
| 34 | 19D307 | SCREW, mach, torx pan hd. | 7 | 96* | 20B514 | BRACKET, strain relief | 1 |
| 35 | See pg. 48 | COIL, filter, <i>includes 36, 76</i> | 1 | 97* | 120593 | SCREW, mach., torx | 2 |
| 36 | 131172 | SCREW, mach, | 1 | 98 | 20B541 | TRIM, edge | 1 |
| 37 | 2002366 | SWITCH, rocker | 1 | 99 | 20B451 | SCREW, hex hd. | 2 |
| 38 | | BOARD, control, assembly, <i>includes 76</i> | 1 | 100 | 117117 | O-RING | 1 |
| | 20B427 | 100-120V | | 101 | See pg.48 | LABEL, Xtreme Torque Advantage | 1 |
| | 20B428 | 220-240V | | 102* | See pg.50 | WIRE, jumper, (220-240V, 110V UK models only) | 1 |
| | 2002367 | 110V UK | | 103▲ | 2001766 | LABEL, moving parts | 1 |
| 39 | 20B443 | SHIELD, motor, top, painted, <i>includes 34</i> | 1 | 104 | See pg.48 | GUN | 1 |
| | | | | 105 | See pg.48 | HOSE | 1 |

▲ Replacement safety labels, tags, and cards are available at no cost.

* Not included in all models.

Parts

Models 17C487, 17C488, 17C489, 17C721, 17M992, 24Z731, 19D873



1124903a

Parts List

Models 17C487, 17C488, 17C489, 17C721, 17M992, 24Z731, 19D873

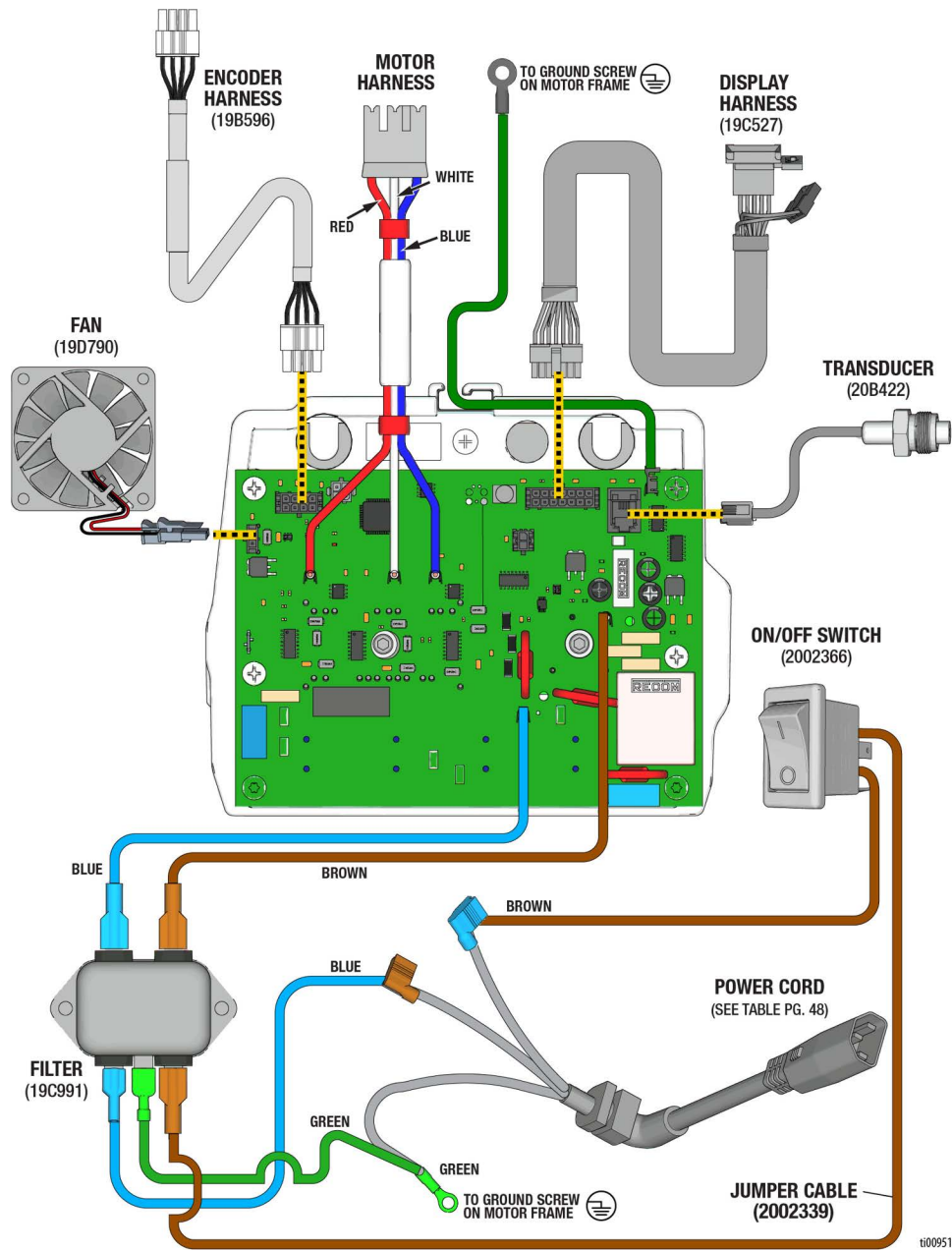
| Ref. | Part | Description | Qty. | Ref. | Part | Description | Qty. |
|------|---------|---|------|--------|--------|---|------|
| 201 | | ROD, displacement, <i>includes 212</i> | 1 | 15B611 | | Models: 17C487, 17C488, 17C489, 17C721, 17M992, 24Z731 | |
| | 24W617 | Models: 17C487, 17C488, 17C489, 17C721, 17M992, 24Z731 | | 19D287 | | Models: 19D873 | |
| | 2004762 | Model: 19D873 | | 217*❖ | 15B112 | PACKING, o-ring (0.941 in. OD) | 1 |
| 202* | 180656 | BUTTON, plug | 1 | 218*❖ | 105445 | BALL, sst, 0.5000 in. | 1 |
| 203 | 193047 | NUT, packing | 1 | 219* | 17V093 | PACKING, o-ring | 1 |
| 204* | 176757 | GLAND, female, throat | 1 | 220* | 160516 | O-RING | 1 |
| 205* | 176754 | GLAND, male throat | 1 | 221* | 176755 | V-PACKING, leather, throat | 2 |
| 206 | | CYLINDER, pump <i>includes 219, 229</i> | 1 | 222* | 192710 | V-PACKING, throat, V-Max™ UHMWPE, blue | 3 |
| | 24W619 | Models: 17C487, 17C488, 17C489, 17C721, 17M992, 24Z731 | | 223* | 176749 | V-PACKING, leather, piston | 2 |
| | 2004756 | Model: 19D873 | | 224* | 192712 | V-PACKING, piston, V-Max™ UHMWPE, blue | 3 |
| 207* | 105444 | BALL, sst, 0.3125 in. | 1 | | | FITTING, pump, QD, 1/4 npt | 1 |
| 208* | 195129 | GLAND, male piston | 1 | 225 | 17C231 | Models: 17C487, 17C488, 17C489, 17C721 | |
| 209* | 180073 | GLAND, female, piston | 1 | | 162453 | FITTING, 1/4 npt Model 17M992 | 1 |
| 211* | 15G234 | GUIDE, piston | 1 | 229 | | NUTS, retaining, not sold separately | |
| 212 | 239937 | VALVE, piston (included with 201) | 1 | | | | |
| 213❖ | 15C011 | GUIDE, ball | 1 | | | | |
| 215❖ | 246429 | KIT, seat, carbide <i>includes 213, 217 and 218</i> | 1 | | | | |
| 216 | | VALVE, intake housing | 1 | | | | |

* - Also included in Kit 18B260 (formerly
part number 244194)

❖ - Also included in Kit 246429

Wiring Diagrams

220-240V



ti00951a